



Technical Update
March 2018

ISO 5211 Panel Mount Dimensions

Ball Valve Panel Mount and Actuator Assembly Threads

Assembly threads for actuator and panel mounting options on Stauff ball valves are now drilled to International Standard ISO 5211. Valves can be ordered with either metric or UNC threaded holes according to the table below.

To Order:

For metric bolts, add a "-PM" to the end of the Stauff part number as below:

BBV-2-N06-8001-M-PM

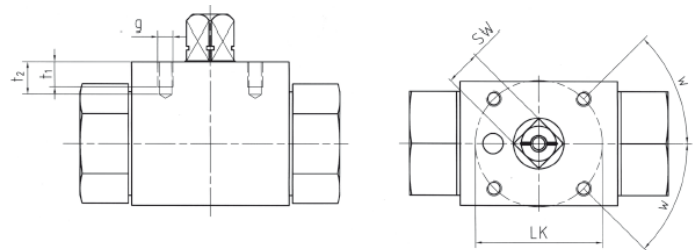
For UNC bolts, add a "-PMU" to the end of the Stauff part number as below:

BBV-2-N06-8001-M-PMU

Note: For customers requiring the "old" 4 bolt panel mount pattern (see page 2) please contact Stauff Customer Service

STAUFF Size	Nominal Size DN	Dimensions $\frac{\text{mm}}{\text{in}}$							
		SW	LK	g(metric)	g(UNC)	t1	t2	w	ISO 5211
02	4	9	36	M5	10-24	6	7.5	30°	F03*
		.35	1.42			.24	.3		
04	6	9	36	M5	10-24	6	7.5	30°	F03*
		.35	1.42			.24	.3		
05	8	9	36	M5	10-24	6	7.5	30°	F03*
		.35	1.42			.24	.3		
06	10	9	36	M5	10-24	7	9	45°	F03
		.35	1.42			.28	.35		
08	13	9	36	M5	10-24	6	8	45°	F03
		.35	1.42			.24	.31		
10	16	12	42	M5	10-24	8	10	45°	F04
		.47	1.65			.31	.39		
12	20	14	50	M6	1/4-20	10	14	45°	F05
		.55	1.97			.39	.55		
16	25	14	50	M6	1/4-20	10	12	45°	F05
		.55	1.97			.39	.47		
20	32	17	50	M6	1/4-20	8	12	45°	F05
		.67	1.97			.31	.47		
24	40	17	50	M6	1/4-20	8	12	45°	F05
		.67	1.97			.31	.47		
32	50	17	50	M6	1/4-20	8	12	45°	F05
		.67	1.97			.31	.47		

*30° not corresponding to ISO 5211



Dimensions for valve types BBV, HBV, CBV, CBVS, to STAUFF size 16. Type FBV for sizes 20, 24, and 32.

Customers are now receiving Stauff ball valves with the new zinc/nickel surface coating which provides over 1,200 hours of resistance to red rust corrosion in salt spray chamber testing. It has a high-quality appearance similar to stainless steel and meets all relevant ELV, REACH and RoHS requirements.

The gradual changeover affects two-way ball valves in sizes ¼" through 1" with NPT or SAE female threaded ports from the BBV-2 series and the most commonly used three-way ball valves from the CBV series.

Contact Stauff for more information

Stauff Corporation

7 Wm Demarest Place
Waldwick NJ 07463

Tel.: (201) 444 7800
E-Mail: sales@stauffusa.com

www.stauff.com

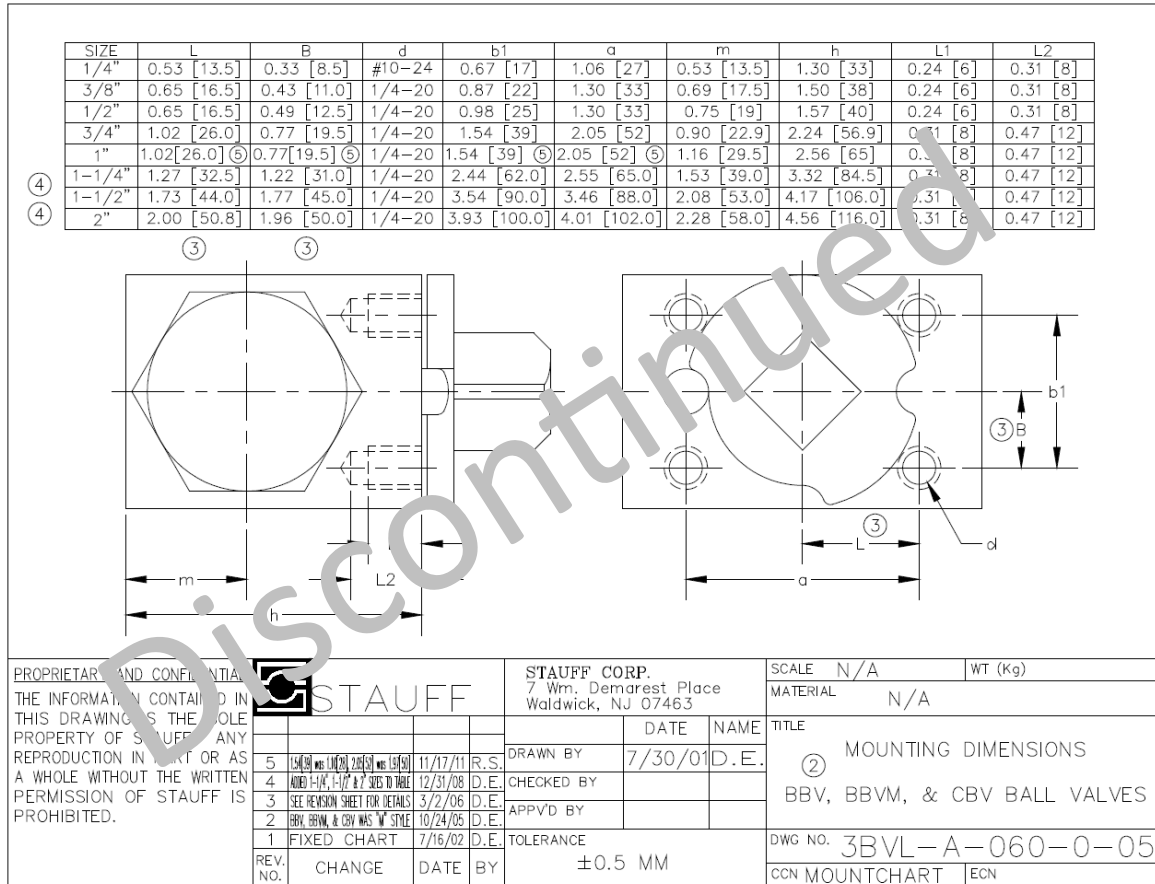


TU 2018-13/13/2018



Technical Update
March 2018

ISO 5211 Panel Mount Dimensions



For customers requiring replacements Stauff can supply the "old" 4 bolt panel mount pattern per the drawing above. Please contact Customer Service

Customers are now receiving Stauff ball valves with the new zinc/nickel surface coating which provides over 1,200 hours of resistance to red rust corrosion in salt spray chamber testing. It has a high-quality appearance similar to stainless steel and meets all relevant ELV, REACH and RoHS requirements.

The gradual changeover affects two-way ball valves in sizes 1/4" through 1" with NPT or SAE female threaded ports from the BBV-2 series and the most commonly used three-way ball valves from the CBV series.

Contact Stauff for more information

Stauff Corporation
7 Wm Demarest Place
Waldwick NJ 07463
Tel.: (201) 444 7800
E-Mail: sales@stauffusa.com
www.stauff.com